

Our Sustainability



NOTTINGHAM VENUES

— ONE DESTINATION • ENDLESS POSSIBILITIES —

OUR COMMITMENT TO SUSTAINABILITY

At Nottingham Venues, everything we do has sustainability in mind. As a business we are committed to reducing our environmental impact and doing our bit to make a difference. We don't have it all figured out just yet but we are taking the right steps and bringing our team with us.

Both of our hotels were built with sustainability at the forefront, with The Orchard Hotel rated BREEM excellent and over the years we have received numerous awards and accreditations.

We are also incredibly lucky to be located within the Green Flag awarded grounds of University of Nottingham.

We constantly monitor our energy, water, food waste and recycling to reduce our impact on the environment and are always looking for new ways to improve.



OUR VISION

To be an environmentally responsible business, helping to achieve a cleaner, safer and healthier World for our guests, our team and future generations.

OUR MISSION

To integrate sustainable practices into every aspect of our operations, from sourcing of materials to the delivery of our products and services.

We aim to lead by example, inspiring our team, guests and partners to embrace sustainability principles.

At Nottingham Venues, sustainability is not just a goal, it is a journey we embark on everyday, guided by our commitment to creating a better, more sustainable world for current and future generations.

OUR AWARDS & ACCREDITATIONS



BREEAM EXCELLENT

The Orchard hotel is rated
BREEAM EXCELLENT



ECO SMART

We are proud to have
been awarded Ecosmart
silver and we hope to
achieve gold within the
next 12 months



Green Meetings

We are currently
in the process of
completing our
green meetings
accreditation



Business Masters 2022

We are proud to
have won the
sustainability
award

OUR ENERGY



SOLAR PANELS

The Orchard Hotel has 60 square metres of photovoltaic panels



LIGHTS

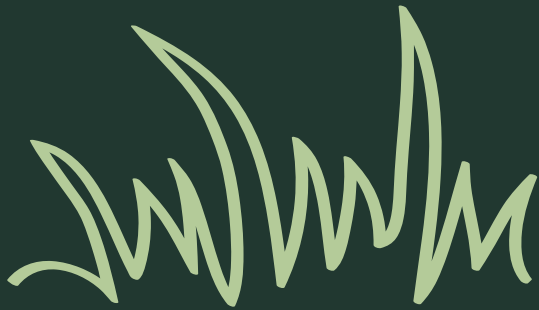
The majority of our rooms have motion-sensitive lighting and LED bulbs



LAUNDRY

We have an energy saving laundry system in place through a laundry contractor with eco credentials

OUR ENERGY



GREEN ROOFS

The Orchard Hotel has wild
biodiverse green roof gardens to
increase heat retention



KEY CARDS

Management of key
cards to minimise
energy consumption



ROOM CLEANING

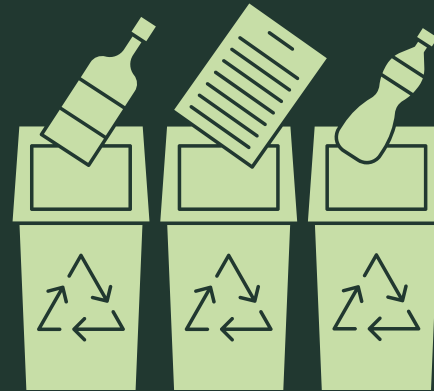
We offer guests the option to
opt-out of room cleaning

OUR RECYCLING



BEDROOMS

We encourage guests to separate their mixed recycling waste, which is then collected and sorted by our housekeeping team



WASTE MANAGEMENT

We work closely with our waste management company to monitor and improve our recycling rates



GUEST AREAS

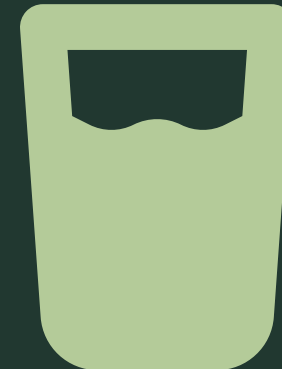
General waste and mixed recycling bins are offered in all of our guest areas

OUR WATER



TOILETS

Our toilets are fitted with valves to reduce water flow. The Jubilee Hotel & Conferences use water recycled from the lake. All our properties have dual flush toilets fitted.



DRINKING WATER

We have what we like to call 'hydration stations' so guests can enjoy complimentary water at every venue

OUR BUILDINGS



BREEAM CERTIFICATION

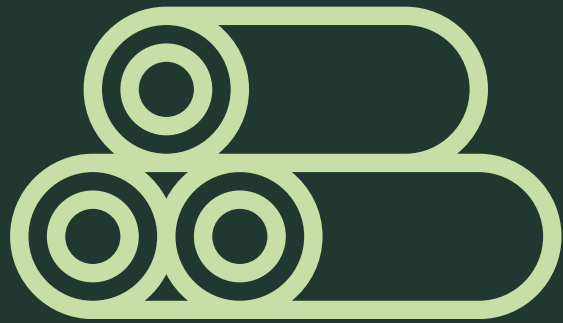
The Orchard Hotel is certified
BREEAM EXCELLENT



PLANTS

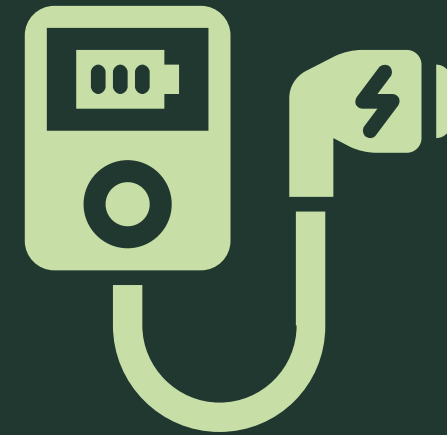
Real plants are used in public areas (not fake plants). We also have a herb garden that our chefs use in Bramleys

OUR BUILDINGS



MATERIALS

Fabrics, carpets, flooring or furniture is sometimes made from upcycled materials. Sustainable or reclaimed/recycled materials are used in the construction of the buildings



EV CHARGING

We have 8 EV charging points at the Orchard Hotel and conference centre for both guests and staff to use

OUR MEETINGS AND EVENTS



MEETING ROOMS

All of our delegate meeting supplies are made from recycled materials



DIGITAL SIGNAGE

Digital/electronic signage in meetings/conference areas to minimise paper waste and printing



AV

Audio-visual equipment is all in-house, saving on transport

OUR FOOD & BEVERAGE MANAGEMENT



TEA & COFFEE

Only fair-trade or ethically sourced coffee and tea is provided



LOCAL

We use local 200 degrees coffee at all our properties and other locally produced beverages



DRINKING WATER

Free drinking water fitted on site to encourage the reduction of single-use plastics

OUR FOOD & BEVERAGE MANAGEMENT



MILK

Oat or almond milk offered
as an alternative to dairy



FOOD MILES

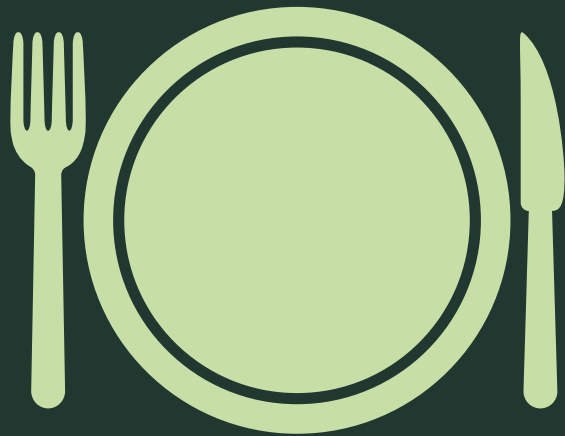
We have initiatives in place
to reduce food miles and
work with local suppliers



CONDIMENTS

Removal or individual sachets
of condiments

OUR CROCKERY & GLASSWARE



CROCKERY

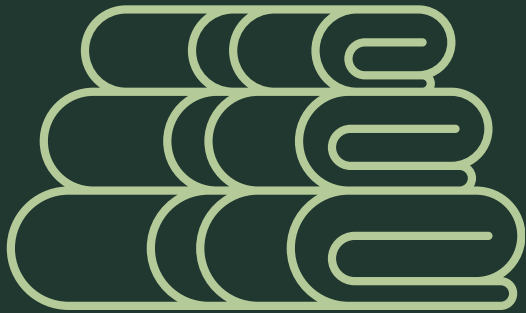
All of our crockery is produced within a 50 mile radius, through an award-winning sustainable supplier



GLASSWARE

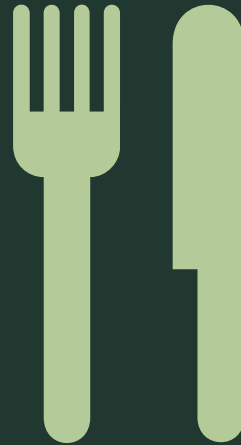
All of our glassware is from a local supplier and is produced with zero emissions

OUR BEDROOMS



LINEN AND TOWELS

Guests are offered the option to re-use linens and towels



MENUS

QR codes are offered for our room service menu with in season and local produce used



SHAMPOOS

Dispensers in each room for shampoos and hand soap that can be easily refilled

OUR PUBLIC TRANSPORT



BIKE RACKS

Bike racks are available at every venue to encourage guests to cycle when possible



BUS

There are many bus routes to and from the University of Nottingham Campus



TRAM

Trams from every 7 minutes from key locations such as Nottingham City Centre and Nottingham Train Station

OUR PUBLIC TRANSPORT



PLANE

East Midlands Airport is a 12 mile drive away with a Skylink bus connection



TRAIN

We are a short 4 miles away from Nottingham train station and only 2 miles from Beeston with a tram connection to the campus



AWARENESS

We encourage all guests to use public transport where possible and promote this via our website

OUR PEOPLE



LIVING WAGE EMPLOYER

We are proud to be leading
the way within the
hospitality industry as a
living wage employer



TRAVEL

We offer a discounted staff
travel scheme encouraging use
of public transport to get to
and from work

OUR PEOPLE



TEAM

We have a dedicated green team made up of representatives across the business, working on initiatives to improve our sustainability.



UNIFORM

All of our uniform is made using recycling plastic bottles with a fully traceable manufacturing process. Each suit saves 15 bottles from entering landfill.

OUR CONTINUED COMMITMENT

To build on the work that has already been done, we are now committing to focusing on these 4 key areas



WASTE REDUCTION



ENERGY REDUCTION



SUPPLY CHAIN



TEAM ENGAGEMENT



COMMUNITY ENGAGEMENT

WASTE REDUCTION

Our aim is to reduce waste across our operations, with the aim of minimizing environmental impact and promoting resource efficiency. We will and increase our onsite recovery of waste from 43% to 75% across the business.

We will do this by...



Visiting ENVA with team members that have most interaction with waste, particularly food waste



Monthly reporting at our Top of the tree event



Introducing this target as part of our annual Balanced Scorecard

ENERGY REDUCTION

Our aim is to drive significant reductions in energy consumption across our business, promoting operational efficiency. We aim to achieve a 10% decrease in energy consumption, contributing to our commitment to a low-carbon future and fostering a culture of responsible energy use amongst our team

We will do this by...



We will do this by...



SUSTAINABLE SUPPLY CHAIN

Our goal is to establish a responsible supply chain that prioritises environmental stewardship, social responsibility, and ethical practices.

We aim to reduce the environmental impact of our supply chain by promoting sustainable sourcing, minimising carbon emissions where possible, and optimising transportation logistics.

We will do this by...



Implementing supplier screening template to be filled in by all new suppliers



Implementing supplier screening template to be filled in by all new suppliers



Implementing supplier screening template to be filled in by all new suppliers

INTRODUCING GREEN MEETINGS

Our aim is to champion sustainability in all of our meetings and events by prioritising environmental responsibility and social consciousness.

We strive to engage participants in our commitment to sustainability, encouraging responsible behaviour and leaving a positive social and environmental legacy with every event we host.

We will do this by...



Introducing a Green Meetings package as part of our standard offering, providing more sustainably sourced F&B, reducing unnecessary stationary and promoting our green surroundings



Updating our marketing collateral and digital platforms to have a real emphasis both on this and our sustainability credentials



Working with the kitchen team to provide delegates with more sustainably sourced and healthy food options including exploring the option to include carbon labelling on menus

TEAM ENGAGEMENT AND EDUCATION

Our aim is to champion sustainability in all of our meetings and events by prioritising environmental responsibility and social consciousness.

We strive to engage participants in our commitment to sustainability, encouraging responsible behaviour and leaving a positive social and environmental legacy with every event we host.

We will do this by...



Providing training to the team via ENVA on the importance of waste segregation



Continue with Green Team meetings and establish more Green champions within departments



Working in partnership with UoNs sustainability team to identify volunteering opportunities on campus

COMMUNITY ENGAGEMENT

Our aim is to build trust and foster collaboration between ourselves and the local community to collectively address challenges and work towards shared goals.

We will develop sustainable and long term community engagement strategies that go beyond short term projects to provide positive outcomes

We will do this by...



Providing education, training and work opportunities

Using our expertise to support and influence local organisations

Identifying local charities and organisations that align with our values

Using local suppliers where possible to support and grow the local economy

Please refer to our “Commitment to the Community” document for full details

HOW YOU CAN HELP



TRAVEL

We would recommend jumping on a train, tram, coach or car share when attending an event.



ENERGY

Remember to turn off any electrical equipment especially lights and TV's when leaving a meeting room or bedroom.



FOOD

Enjoying one of our delicious buffets? We kindly ask that you only plate up what you will eat and come back for more after.



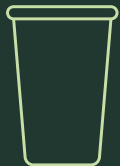
PAPER

Although we offer complimentary notepads and pens in our meeting rooms, if you don't really need it resist the urge to doodle and leave it for the next guest.



VIRTUAL TOURS

We have virtual tours for each of our venues which saves you time and reduces pollution as you don't have to travel for a show around.



PLASTIC

We have water stations where you can refill your water bottle for free. We only use reusable cups, serving plates and cutlery.

